

Adirondack Half Marathon 2010

Schroon Lake, NY

Course Description

Half-marathon course starts southwest of the hamlet of Adirondack, NY and finishes at the town park in Schroon Lake village. Starting on East Shore Dr at Wincoma cottage and driveway for #816, the course proceeds in a southwesterly direction to R at junction of E. Schroon River Rd / Glendale Rd and turns R at the entrance to the Bible Institute west of the Schroon River bridge, continuing in a northerly direction on Institute interior roadways, and exiting **R at US Rte 9, where runners are restricted to the right of the center line**, then proceeding on Rt 9 into Schroon Lake village to a R at Leland Ave and finishing at the Town Park, 31' 6" after utility pole NM 6.

Key Points

All points marked with yellow paint dot unless indicated otherwise. **Mile splits are 0.1 mi after marathon splits as indicated below.**

Start On East Shore Dr at Wincoma cottage on S and drive for #816 on N. Point on N is 17' 4" from corner post for entrance to cottage and 54' 8" from utility pole NM 125. Marked with paint and mag nail both sides.

Mile 1 On East Shore Dr at Shaw Hill Rd, 27' before utility pole NM 98.

Mile 2 On East Shore Dr at Lakeview Dr at culvert.

Mile 3 On East Shore Dr at drive for #211, 3' before utility pole NM 35-1 on L.

Mile 4 On East Shore Dr at junction with E. Schroon River Rd, 12' 11" before stop sign.

Mile 5 At archery range on interior roadway of Bible Institute, 7' after rock on R and 16' 6" before corner post.

Mile 6 On Rt 9, 74' 6" after utility pole NM 55 and 138' before utility pole NM 56.

Mile 7 On Rt 9, 12' 7" after mile post '9 1710 2375'.

Mile 8 On Rt 9, 57' 7" before utility pole NM 113.

Mile 9 On Rt 9 at Bay Rd, 51' 3" before S corner post for yard.

Mile 10 On Rt 9 at Old Schroon Rd, 12' before storm grate.

Mile 11 On Rt 9 i/f/o partially hidden utility pole 3 at #648 and 36' 6" before Fallen Rock Zone sign.

Mile 12 On Rt 9 at Easy St (pvt rd), 19' 11" after S edge of storm grate.

Mile 13 On Rt 9 (Main St) 2' before Start line.

Finish On Leland Ave at town park. S point is 21'3" after utility pole NM 6; N point is 31' 6" before sidewalk.

Course adjusted 9/13/19
Replaces NY09027JG

Finish
Leland Ave
at Town Park



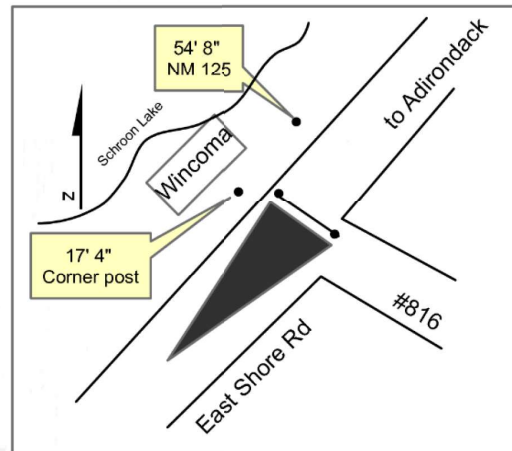
USATF Certificate

NY09087JG

Effective: 09/18/2019

Through: 12/31/2019

Detail of Start



Detail of Finish

